



Notice of Event

Neyland Yacht Club Midsummer Marathon

24th June 2023

1. **Organising authority:** Neyland Yacht Club
2. **Rules:** The event will be governed by IRPCS. Specific attention should be given to rules:
 - 8 (action to avoid a collision),
 - 9 (narrow channels – sailing boats should not impede larger vessels, such as the Irish Ferry or tankers),
 - 12 (sailing vessels give-way rules – port-starboard, windward-leeward),
 - 13 (overtaking boat keeps clear), and
 - 18 (responsibilities between vessels – specifically sail gives way to vessels restricted in her ability to manoeuvre).
3. **Eligibility:** This event is open to all sailors who hold membership of an RYA-affiliated club and there are no restrictions on what boats can be used.
4. **Location:** The event will be run from Neyland Yacht Club.
5. **Entries:** Entry fee will be per competitor - £5
6. **Registration:** All competitors must register to take part by Tuesday 20th June 2023 via the online entry form: <https://forms.gle/snqB4YCH7Aw86Gbi6>
7. **Sub-events:**
 - 1) The event is split into three sub-events:
 - Yacht Marathon
 - Dinghy Marathon (open to dinghy classes with a PY 1150 or smaller)
 - Dinghy Half-Marathon (open to all dinghy classes)
 - 2) The events stated in 7.1 will start at 0900 using the yacht start line located between the starting mast at Neyland Yacht Club and the large white line painted on the wall of Pembroke Port. A warning signal will be made at 0855.



8. Safety:

- 1) The safety of the boat is the sole responsibility of the owner/competitor. This includes having adequate insurance.
- 2) The decision to launch/start or continue in the event is the owner/competitor's and the event organisers accept no responsibility for loss/injury or damage.
- 3) The event lead has the authority to cancel/postpone/delay any planned sub-event at any time.
- 4) Nothing done by the organisers can reduce the responsibility of the boat nor will it make the organisers responsible for any loss, damage, death, or personal injury however it may have occurred, as a result of the boat competing in the event. The organisers encompass everyone helping to run the event: the organising authority, the event lead, and the safety crew.
- 5) The provision of safety boats does not relieve the boat of her responsibilities.
- 6) If you appear in trouble at any time then the event lead may ask the safety crew to find out if you are ok, if you continue to appear in trouble then the event lead can ask the safety crew to advise you to come ashore.
- 7) Personal buoyancy shall be worn by all competitors whilst afloat.
- 8) Each boat is required to hold adequate insurance and in particular hold insurance against third-party claims in the sum of at least £3,000,000
- 9) If no crew are available to man the safety boat(s) then the competitors will be asked to volunteer to provide cover, if there are no volunteers then a competitor's name will be drawn at random to ensure there is always safety cover. If a competitor is providing safety cover they will be refunded their entry fee for the event.

9. Event courses:

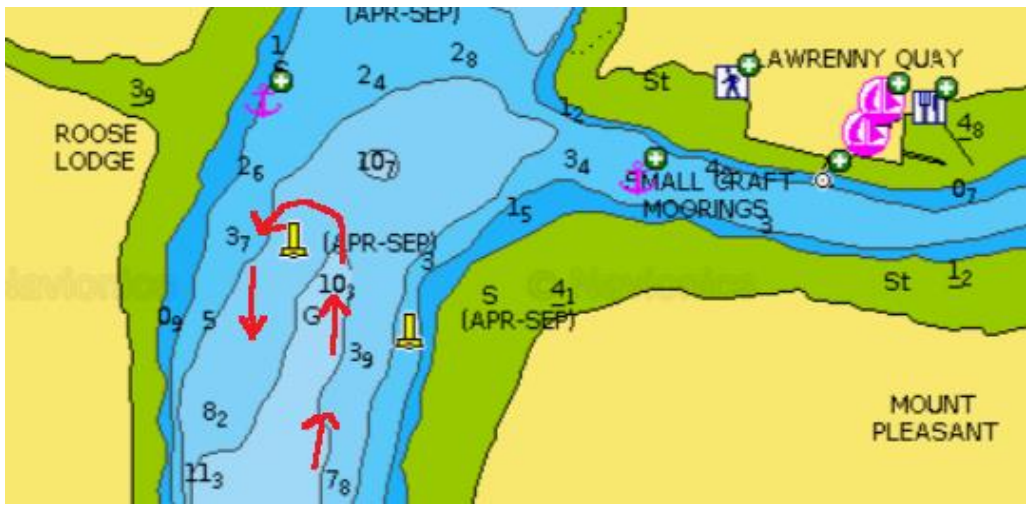
- 1) **Start and finish line** for all events is located between the starting mast at Neyland Yacht Club and the large white line painted on the wall of Pembroke Port (see chart below for approximate location).



2) Yacht Marathon

a) Start: Neyland Yacht Club long line (as shown in 9.1)

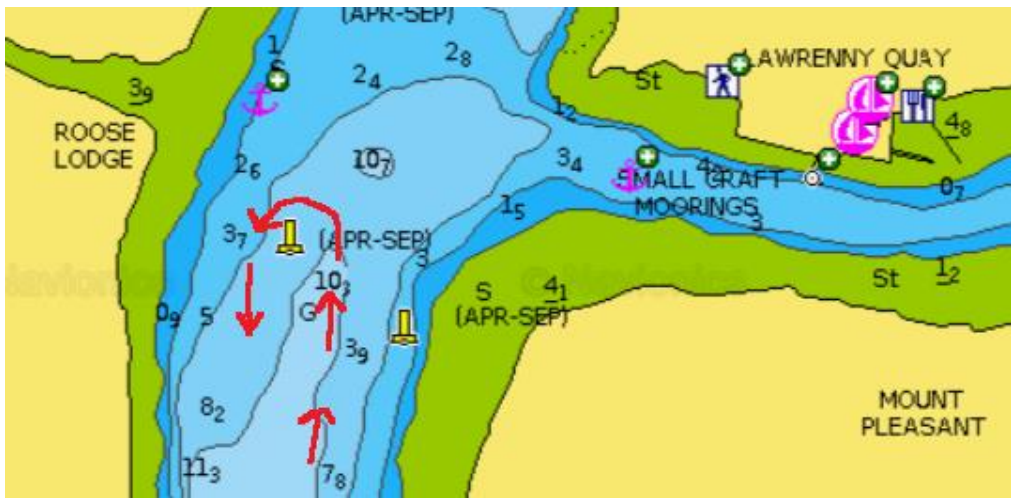
b) Mark 1: Llawrenny Quay no planning mark – round to port



c) Mark 2: Dakotian east channel mark – round to port



d) Mark 3: Llawrenny Quay no planning mark – round to port



e) Finish: Neyland Yacht Club long line (as shown in 9.1)

3) Dinghy Marathon and Half-Marathon

- a) **Start:** Neyland Yacht Club long line (as shown in 9.1)
- b) **Mark 1:** Neyland Spit port cardinal mark – round to port
- c) **Mark 2:** Eastward mark (Bridge club mark) – round to port
- d) **Mark 3:** Bathhouse club mark – round to port
- e) **Mark 4:** Red post – round to port
- f) **Mark 5:** Hazelbeach port cardinal mark – round to port
- g) **Mark 6:** Weir Spit – round to port
- h) **Mark 7:** Pennar Channel – round to port
- i) **Mark 8:** Pennar Post – round to port
- j) **Mark 9:** Carr Spit 1 – round to starboard
- k) **Mark 10:** Carr Spit 2 - round to starboard
- l) **Mark 11:** Green post - round to starboard
- m) Continue for **6 laps in total** for marathon or **3 laps in total** for half-marathon
- n) **Finish:** Neyland Yacht Club long line (as shown in 9.1)

